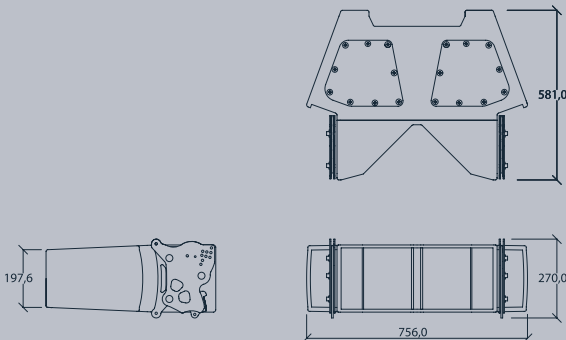


The LS4 element is a very compact and extremely powerful high-output speaker that exceeds all the expectations about how a Line-Source system should sound.

It is an active 4-way system with a operating frequency bandwidth from 60Hz to 20Khz. This response is lowered down to 28Hz with the addition of the SB118 or SB221 Subwoofers. LS4 features four 8" drivers in a bass-reflex tuned enclosure and a 1.5" compression driver coupled to our patented (Elliptic Plane Progression isophasic Coupler) (Eppic®) waveguide for HF reproduction.

The 8" drivers are powered in a way that all four are actually working in parallel at Low frequencies, providing the surface area equivalent to a 15" loudspeaker. At the Mid frequencies however, only the two front coplanar V-shaped transducers are working, aiding the HF waveguide to deliver a symmetric horizontal coverage of 100° without secondary lobes over the entire frequency range.

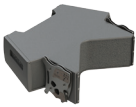
The LS4 comes pre-wired, complete with rigging hardware, power and control electronics and delivered in road cases.





COMPONENTS

LS-L



SB118



SB221



CF10



Usable Bandwidth (- 10 dB): 60 Hz - 20 kHz
 Nominal Directivity (- 6 dB): 100° Horizontal
 - Symmetric
 Maximum Continuous SPL: 130 dB
 Power Handling: 1300 W RMS

Components:

- LF: 4/4 x 8" (All 4 working) weather-resistance 2 x 16 ohm
- MF: 2/4 x 8" (Only front V-shaping weather-resistance 2 x 16 ohm
- HF: 1 x 1,5" HF compression driver 16 ohm

Rigging: Angles from 0° to 5° in 0,25° linear step increment

Physical Data:

- Width: 756 mm
- Height: 270 mm
- Depth: 581 mm
- Weight: 36 Kg
- Material: Baltic Birch Plywood
- Connections: 2 x 8 Pin Speakon